



studio unit a

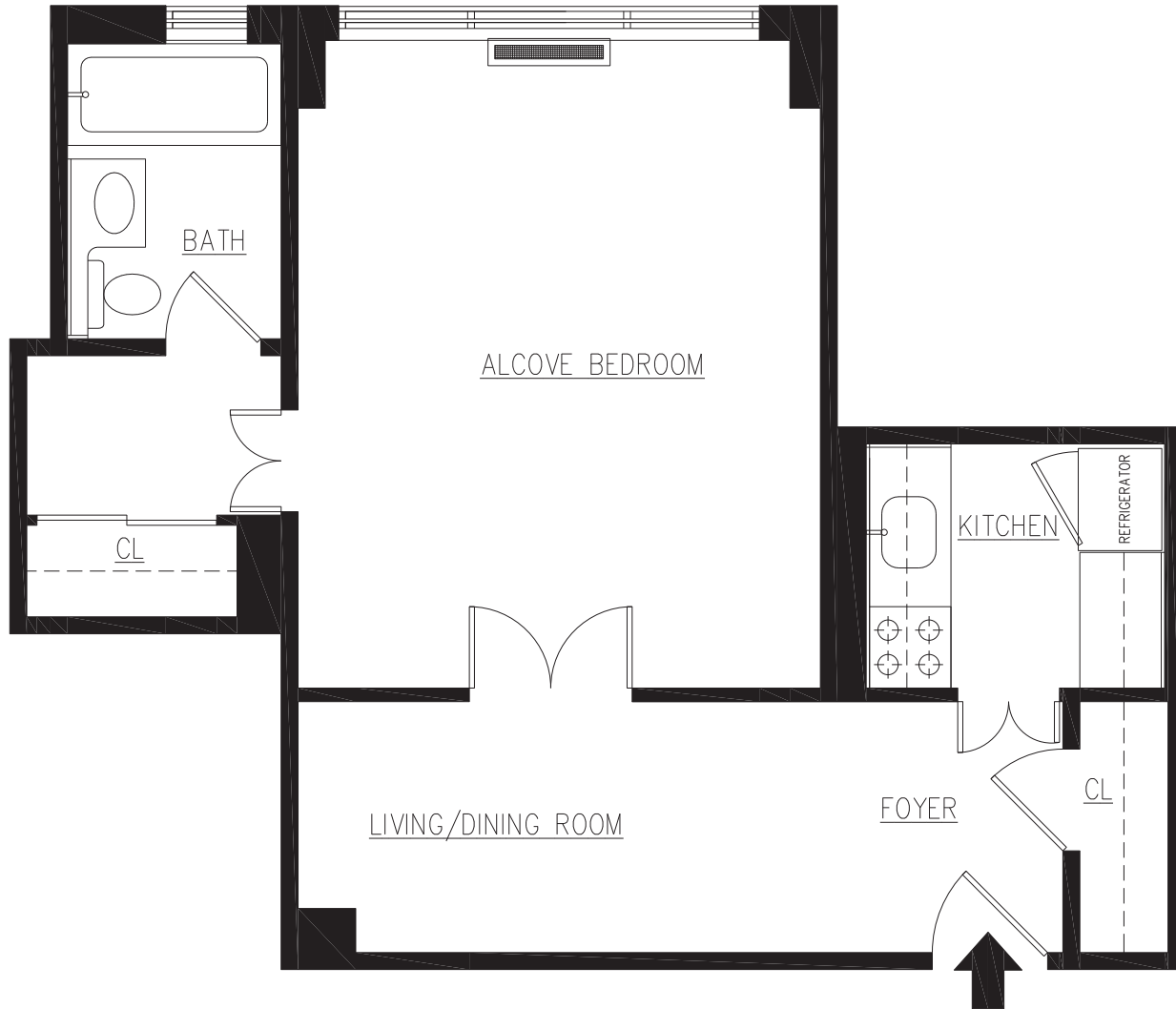


60 West 57th Street, New York, NY 10019

Jeffries Morris Inc.
JMG Architect, P.C.

Patricia Warren, Residential Department
t 212 425 2950 | f 212 344 3108 | info@60w57.com

Renters are advised that any quoted floor areas are approximate sizes.



studio unit c

HEMISPHERE HOUSE

60 West 57th Street, New York, NY 10019

Jeffries Morris Inc.
JMG Architect, P.C.

Patricia Warren, Residential Department
t 212 425 2950 | f 212 344 3108 | info@60w57.com

Renters are advised that any quoted floor areas are approximate sizes.



studio unit g

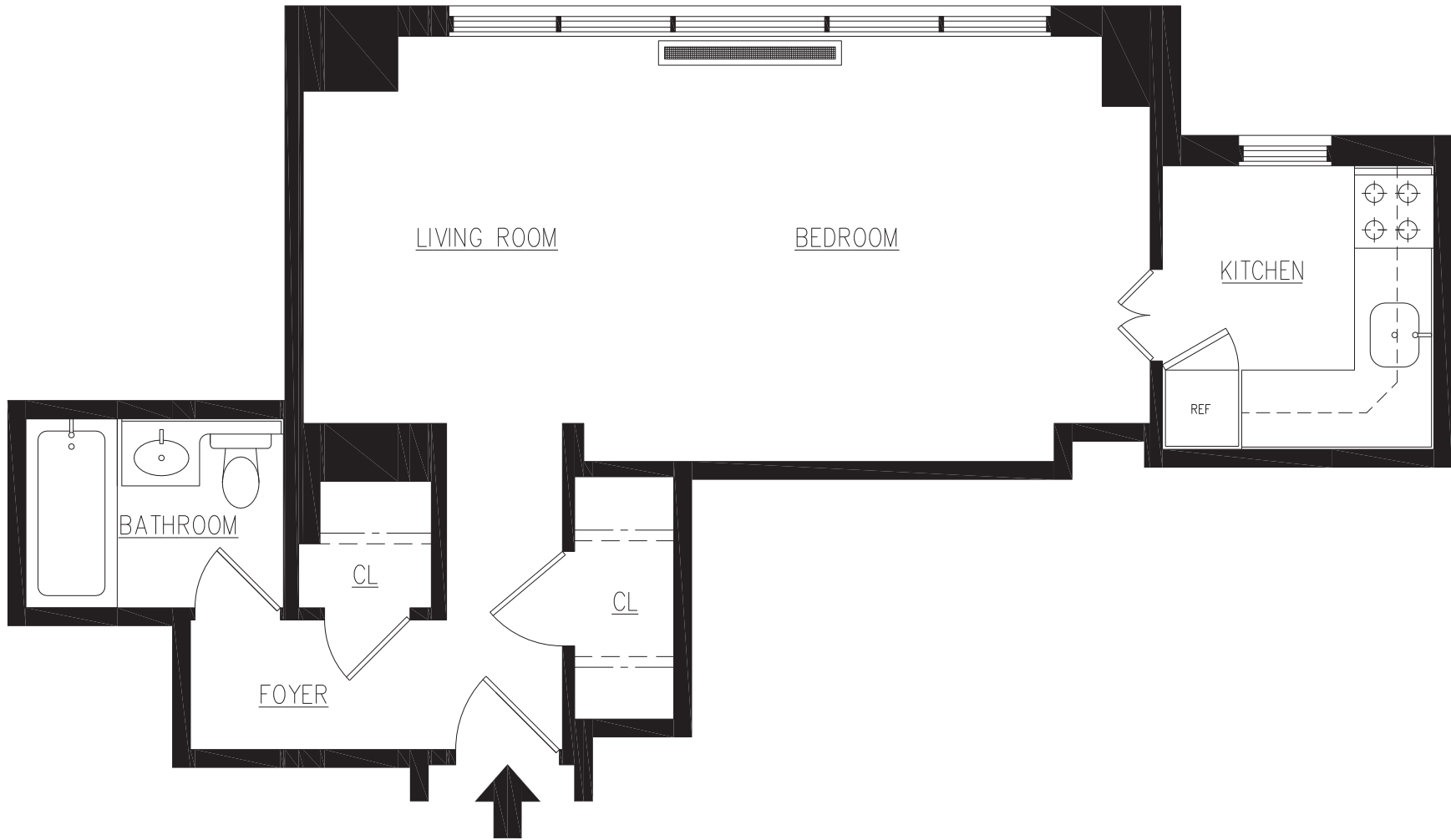
HEMISPHERE HOUSE

60 West 57th Street, New York, NY 10019

Jeffries Morris Inc.
JMG Architect, P.C.

Patricia Warren, Residential Department
t 212 425 2950 | f 212 344 3108 | info@60w57.com

Renters are advised that any quoted floor areas are approximate sizes.



studio unit h

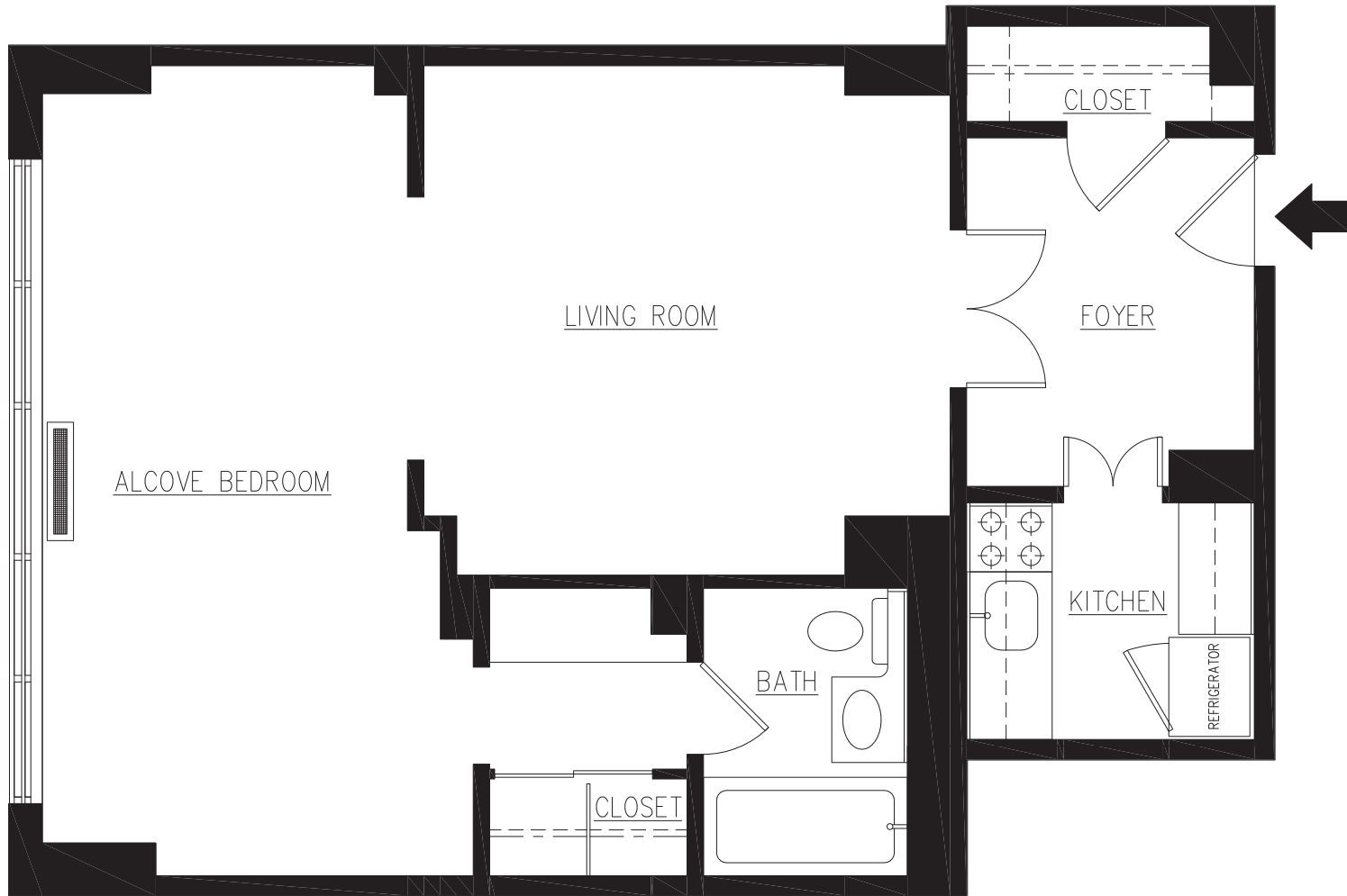


60 West 57th Street, New York, NY 10019

Jeffries Morris Inc.
JMG Architect, P.C.

Patricia Warren, Residential Department
t 212 425 2950 | f 212 344 3108 | info@60w57.com

Renters are advised that any quoted floor areas are approximate sizes.



studio unit j

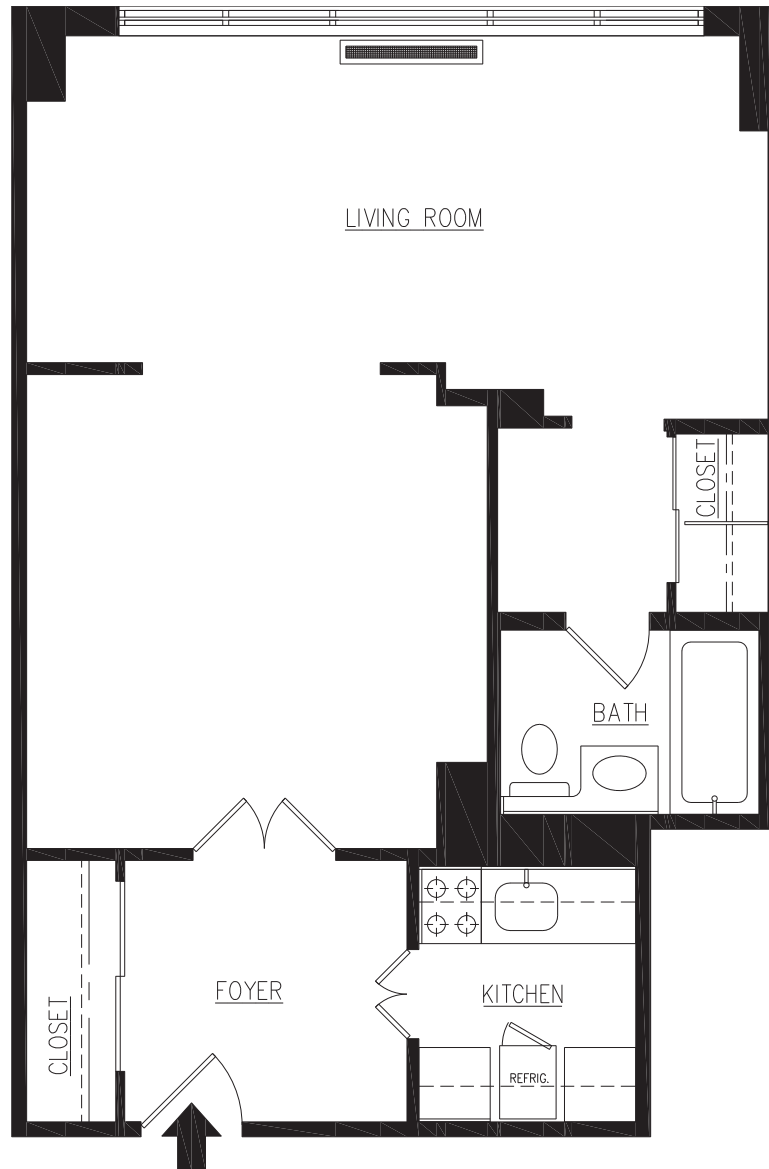


60 West 57th Street, New York, NY 10019

Jeffries Morris Inc.
JMG Architect, P.C.

Patricia Warren, Residential Department
t 212 425 2950 | f 212 344 3108 | info@60w57.com

Renters are advised that any quoted floor areas are approximate sizes.



studio unit k

Jeffries Morris Inc.
JMG Architect, P.C.

Renters are advised that any quoted floor areas are approximate sizes.



60 West 57th Street, New York, NY 10019

Patricia Warren, Residential Department
t 212 425 2950 | f 212 344 3108 | info@60w57.com



studio unit m

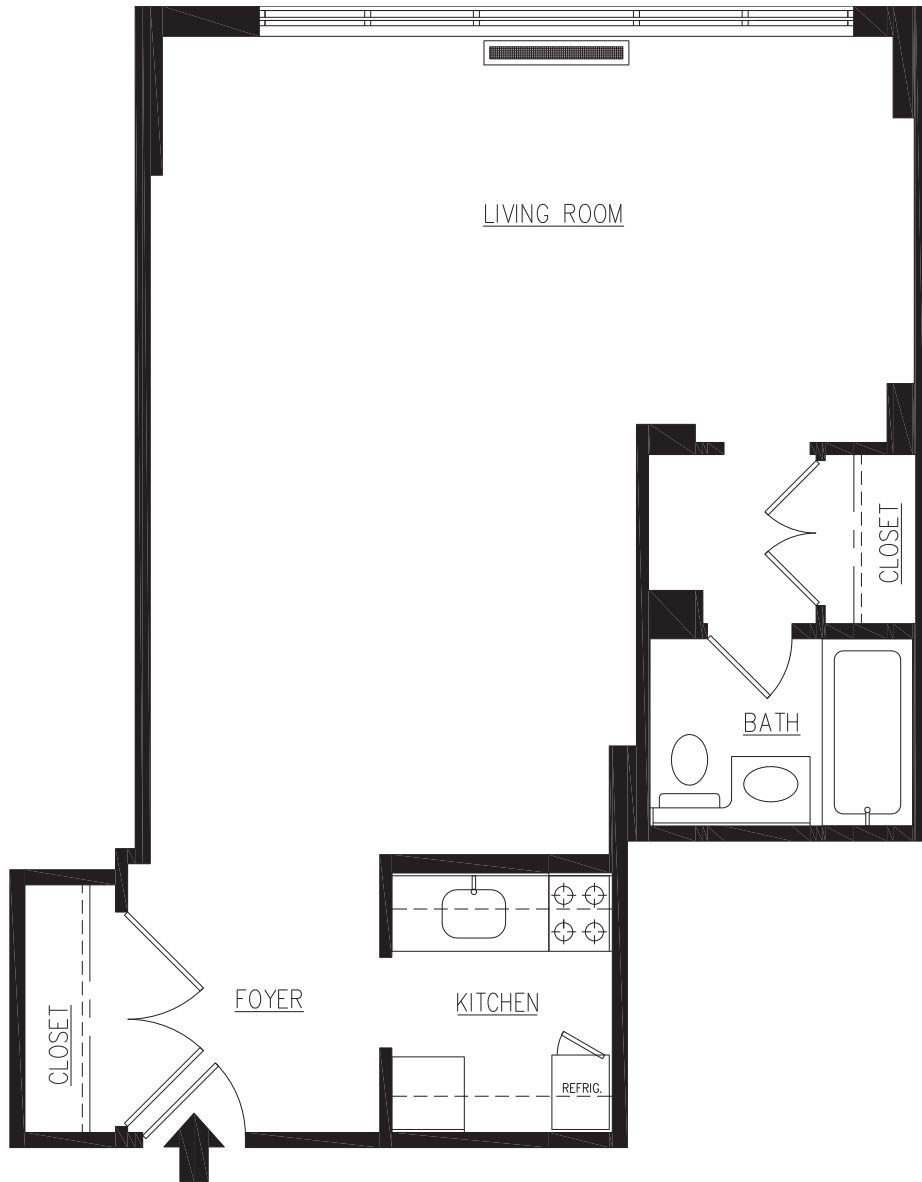
Jeffries Morris Inc.
JMG Architect, P.C.

Renters are advised that any quoted floor areas are approximate sizes.

HEMISPHERE HOUSE

60 West 57th Street, New York, NY 10019

Patricia Warren, Residential Department
t 212 425 2950 | f 212 344 3108 | info@60w57.com



studio unit n

Jeffries Morris Inc.
JMG Architect, P.C.

Renters are advised that any quoted floor areas are approximate sizes.

HEMISPHERE HOUSE

60 West 57th Street, New York, NY 10019

Patricia Warren, Residential Department
t 212 425 2950 | f 212 344 3108 | info@60w57.com



studio penthouse



60 West 57th Street, New York, NY 10019

Jeffries Morris Inc.
JMG Architect, P.C.

Patricia Warren, Residential Department
t 212 425 2950 | f 212 344 3108 | info@60w57.com

Renters are advised that any quoted floor areas are approximate sizes.